



Model: V6 Frontier Front Wheel Drive Hybrid

201 Growth Parkway Angola, IN 46703

Canadian Suggested Retail Price List in USD
Jan-20

Phone: 260-665-2769

Fax: 260-665-3047

Email: iim@mobility-usa.com

www.mobility-usa.com

Quote: _____

P.O. _____

Bill To:

Dealer: _____ Contact: _____

Address: _____

City: _____ State: _____ Zip: _____

Phone: _____ Fax: _____

Email: _____ Mark For: _____

Ship To:

Same as Bill To: _____

Dealer: _____ Contact: _____

Address: _____

City: _____ State: _____ Zip: _____

Phone: _____ Fax: _____

Email: _____ Mark For: _____

Client Information and Specifications:

Demo Performed: Yes No

Client Name: _____

A) Top of Shoulders: _____

Diagnosis: _____

B) Chest Depth: _____

C) Chest Width: _____

Funding Source: _____

D) Seat Depth: _____

E) Top of Head: _____

F) Elbow to Hand: _____

Client Age: _____

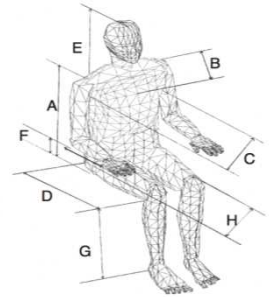
G) Knee to Foot: _____

Weight: _____

H) Hip Width: _____

Height: _____

I) Seat Pan to Elbow: _____



V6 Frontier Front Wheel Drive Hybrid Features and Specifications

Joystick/Power Module: Penny and Giles R-net

Length: 39" Width: 26.25"

Turning Radius: 20.5"

Weight Limit: 400 lbs - 340lbs with elevate

Motors: (2) 4 Pole, 24 Volt Motors, 800W each, Gear in Line

Batteries: (2) Group 24, 73 Amp hr

Drive Tires: Black Pneumatic 14"x3"

Castors: Black Pneumatic or Foam-Filled 2.50-4

Top Speed: 6.5 mph

Performance will vary depending on weight and power options

Product Weight- No power seat frame, MPS seat, fixed legrest and batteries: 259 lbs

Product Weight- Including power tilt, variable seat height, power recline back,

Power elevating legrest and batteries: 330 lbs

Weights vary depending upon options

Warranty: Limited Lifetime on Frames

1 Year Limited on Electronics

2 Year Limited on Motors



Other Products by:
Extreme X8, Frontier V6 Mid Wheel Drive,
Frontier V6 Rear Wheel Drive, Frontier V6 C73

V6 Frontier Front Wheel Hybrid Drive System Options

Part Number	Description	Price (USD)	HCPCS Code
V6 Front Wheel Hybrid Drive System No Power			
Includes: FWD HY Drive System for No Actuator Function, Independent Articulating Suspension, Charger, and Seat Restraint			
<u> </u> FWDHY50	FWD HY No Power Rehab flat pan seat with Rehab back canes or Backrest	\$11,150.00	K0850
<u> </u> FWDHY51	FWD HY No Power MPS seat and backrest	\$11,150.00	K0851
V6 Front Wheel Hybrid Drive System Single Power			
Includes: FWD HY Drive System for Single Actuator Function, Independent Articulating Suspension, Charger, and Seat Restraint			
<u> </u> FWDHY58	FWD HY Single Power Rehab flat pan seat with Rehab back canes or Backrest	\$11,150.00	K0858
<u> </u> FWDHY59	FWD HY Single Power MPS seat and backrest	\$11,150.00	K0859
V6 Front Wheel Hybrid Drive System Multiple Power			
Includes: FWD HY Drive System for Multiple Actuator Function, Independent Articulating Suspension, Charger, and Seat Restraint			
<u> </u> FWDHY62	FWD HY Multiple Power Rehab flat pan seat with Rehab back canes or Backrest	\$11,150.00	K0862
<u> </u> FWDHYMP	FWD HY Multiple Power MPS seat and backrest	\$11,150.00	

FRAME COLOR select one

<u> </u> 4622BK	Black Frame Color	N/C	
<u> </u> 4622RD	Red Frame Color	N/C	
<u> </u> 4622AG	Mossy Green Frame Color	N/C	
<u> </u> 4622BL	Royal Blue Frame Color	\$270.00	
<u> </u> 4622Y	Yellow Frame Color	\$270.00	

BATTERIES

<u> </u> BAT34G	Group 34 Gel Battery 60 AH - 43 lbs each installed -two required	\$355.00	E2359
<u> </u> BAT24G	Group 24 Gel Battery 73 AH - 52 lbs each installed - two required	\$415.00	E2363
<u> </u> CTE	Battery Charger	N/C	E2367

TIRES

<u>Castors</u>			
<u> </u> WH250BP	Pneumatic Castor 2.50-4 - two non-marking	N/C	
<u> </u> WH250BS	Foam Filled Castor 2.50-4 - non-marking two required (each)	\$60.00	
<u>Drive Tires</u>			
<u> </u> WH14BP	Complete Hybrid Drive Tire 14x3 Pneumatic	N/C	
<u> </u> WH14BS	Complete Hybrid Drive Tire 14x3 Solid - two required (each)	\$65.00	
<u>Anti Tips</u>			
<u> </u> 1226	Anti Tips for FWD (pair) - required	\$475.00	

SPARE TIRES

Part Number	Description	Price (USD)	HCPCS Code
<u>Spare Drive Tires and Castors (each)</u>			
S-WH14BP	Spare Complete Hybrid Drive Tire 14x3 Pneumatic	\$265.00	E2381
S-WH14BS	Spare Complete Hybrid Drive Tire 14x3 Solid	\$325.00	E2390
S-WH145BPB	Spare Complete AT Drive Tire 145/70-6 Pneumatic	\$300.00	A9270
4586	Complete AT Drive Tire 145/70-6 with Puncture Resistant Tire Liner	\$490.00	A9270
TS1	Tire Sealant for 1 Pneumatic Drive Tire	\$15.00	A9270
S-WH250BP	Spare Pneumatic Castor 2.50-4	\$115.00	E2384
S-WH250BS	Spare Foam Filled Castor 2.50-4	\$160.00	E2387
1595	Jack for Drive Tire	\$160.00	A9270

SEATING SYSTEM

Include: Either Multi-Position Seat (MPS) Seat Back or Rehab Back Canes with a MPS seat cushion (MPS seat only available with MPS back) or a solid rehab seat pan.

5338	Variable Seat Height - 12" Seat Elevator for transfer assist - 340 lb. Capacity*	\$5,270.00	E2300
LSB111/LSB112	STF: 17" QTY 1	N/C	
3303/3304	STF: 18" QTY 1	N/C	
3305/3306	STF: 19" QTY 1	N/C	
4967	No Power Seating System - 400 lb. Capacity	\$5,140.00	K0108
5339	50° Power Tilt in Space - 400 lb. Capacity*	\$6,050.00	E1002
1337	135° Power Recline - for MPS Backrest and seat - 400 lb. Capacity*	\$4,305.00	E1003
3600	50° Tilt & 135° Power Recline - for MPS Backrest and seat - 400 lb. Capacity*	\$9,555.00	E1006
2906	135° Power Recline - MPS Backrest and flat pan - 400 lb. Capacity*	\$4,305.00	E1003
3606	50° Tilt & 135° Power Recline - MPS Backrest and flat pan - 400 lb. Capacity*	\$9,555.00	E1006
3932	135° Integrated Shear Reduction - for Rehab Canes - 400 lb. Capacity*	\$5,705.00	E1004
3500	50° Tilt & 135° Integrated Shear Reduction - for Rehab Canes - 400 lb. Capacity*	\$10,995.00	E1007
3323	STF: _____ 17" QTY 0 _____ 18" QTY 2 _____ 19" QTY 4	N/C	

Reduced Drive Capability (allows for driving at 20% speed)

RDCT	Reduced Driving Speed while tilted	\$650.00	A9270
RDCE	Reduced Driving Speed while elevated	\$650.00	A9270

*Must be ordered with upgraded electronics SFCK or MFCK depending on number of options selected

ADDITIONAL ACTUATOR FUNCTION

3801	Retractable Docking Pin*	\$3,000.00	A9270
5295	EZ Lock Stabilizer Kit for driving in chair with EZ Lock docking	\$375.00	A9270
5293	QLK 150 Stabilizer Kit for driving in chair with Q-Straint docking	\$260.00	A9270

*Must be ordered with SFCK or MFCK depending on number of options selected

POWER SEAT OPTIONS

SFCK	<u>Single Seat Function Control Kit</u>	\$1,400.00	E2310
	MUST be selected if ordering 1 actuator functions		
CRTL5-P	External 5 Button Box - placed between armrest pad & joystick -for direct access to power seat functions	\$750.00	
3634JS	8 Way Toggle - placed beside joystick - for direct access to power seat functions - requires PG-JSMD	\$860.00	
MFCK	<u>Multiple Seat Function Control Kit</u>	\$2,850.00	E2311
	MUST be selected if ordering more than 1 actuator functions.		
CRTL5-P	External 5 Button Box - placed between armrest pad & joystick -for direct access to power seat functions	\$750.00	
3634JS	8 Way Toggle - placed beside joystick - for direct access to power seat functions - requires PG-JSMD	\$860.00	

SEAT SIZES (width x depth) select one

Part Number	Description	Price (USD)	HCPCS Code
<u>MPS Seat Sizes (width x depth)</u>			
1673	16" x 16" Vinyl Seat	N/C	E2605
1674	16" x 18" Vinyl Seat	N/C	E2605
1675	18" x 16" Vinyl Seat	N/C	E2605
1676	18" x 18" Vinyl Seat	N/C	E2605
1678	18" x 20" Vinyl Seat	N/C	E2605
1679	20" x 18" Vinyl Seat	N/C	E2605
1680	20" x 20" Vinyl Seat	N/C	E2605
1681	22" x 18" Vinyl Seat	\$365.00	E2606
1682	22" x 20" Vinyl Seat	\$365.00	E2606

Rehab or Flat Pan Seat Sizes (width x depth)

Adjustable in width & depth for most sizes

2792STD	Flat Pan Seat Width x Depth	W: _____ (13"-21")	D: _____ (13"-21")	N/C	K0108
2792DP	Flat Pan Seat Width x Depth	W: _____ (22"-23")	D: _____ (13"-21")	\$365.00	K0108

SEATBACK OPTIONS select one**MPS Options** - MPS comes with manual recline**Breathable Cloth MPS Backrest**

1360	Cloth Backrest - 16"-20" Wide & 22" Tall	N/C	E2620
1520	Cloth Tall Backrest - 16"-20" Wide & 26" Tall	\$440.00	E2620
1361	Cloth Wide Backrest - 22"-23" Wide & 22" Tall	\$265.00	E2621
4598	Cloth Tall & Wide Backrest - 22"-23" Wide & 26" Tall	\$525.00	E2621

Wipeable Vinyl MPS Backrest

1360VI	Vinyl Backrest - 16"-20" Wide & 22" Tall	\$240.00	E2620
1520VI	Vinyl Tall Backrest - 16"-20" Wide & 26" Tall	\$630.00	E2620
1361VI	Vinyl Wide Backrest - 22"-23" Wide & 22" Tall	\$320.00	E2621
4598VI	Vinyl Tall & Wide Backrest - 22"-23" Wide & 26" Tall	\$745.00	E2621

Seatback Accessories for MPS Backrest

4784	Push Handle - needed for O2 holder, backpack, cane holder	\$125.00	A9270
2533	Accessory Mount - needed for aftermarket headrest, attendant control	\$95.00	A9270

Rehab Back Cane Options - width 13"-22" & depth 13"-21" & height 24" with 7/8" tubing

3920	Fixed Rehab Back Canes	N/C	A9270
3922	Quick Release Flip Forward Rehab Back Canes - for small vehicle transport	\$955.00	A9270

HEADREST OPTIONS

2770	Cloth Headrest - 12"x4.5"x6.25" - MPS seat back only	\$325.00	E0955
2770VI	Vinyl Headrest - 12"x4.5"x6.25" - MPS seat back only	\$325.00	E0955
J3PLSH10	WHITMYER PLUSH Headrest Pad - 10" X 5" - requires J3HEDX & 2533	\$245.00	E0955
J3HEDX	WHITMYER AXYS Headrest Hardware - depth adj .5" behind backrest and 7" forward	\$310.00	E1028

REHAB SEATING OPTIONS

Part Number	Description	Price (USD)	HCPCS Code
	For more options go to www.sunrisemedical.com		
Jay - Backrest	Backrest will have the width of the MPS seat or flat pan. Please choose your back height.		
	Backrest will come with 2 pt hardware with a 500 lb capacity		
<u> </u> J3PA	Jay 3 Posterior - 2.2" of lateral thoracic support - goes to 20" wide _____ 16.5" _____ 18" _____ 19.5" _____ 21" _____ 22.5" _____ 24"	\$665.00	E2613
<u> </u> J3PAW	Jay 3 Posterior - 2.2" of lateral thoracic support - goes to 22" wide _____ 18" _____ 21"	\$960.00	E2614
<u> </u> J3PL	Jay 3 Posterior Lateral - 3" of lateral thoracic support - goes to 20" wide _____ 16.5" _____ 18" _____ 19.5" _____ 21" _____ 22.5" _____ 24"	\$770.00	E2615
<u> </u> J3PD	Jay 3 Posterior Deep - 6" of lateral thoracic support - goes to 20" wide _____ 18" _____ 21"	\$910.00	E2620
<u> </u> J3HVPA	Jay 3 Posterior - 2.2" of support with heating/ventilation technology - goes to 20" wide _____ 16.5" _____ 18" _____ 19.5" _____ 21"	\$1,695.00	E2613
<u> </u> J3HVPL	Jay 3 Posterior Lateral - 3" of support with heating/ventilation technology - goes to 20" wide _____ 16.5" _____ 18" _____ 19.5" _____ 21"	\$1,795.00	E2615
<u> </u> J3HVPD	Jay 3 Posterior Deep - 6" of support with heating/ventilation technology - goes to 20" wide _____ 18" _____ 21"	\$1,940.00	E2620
Jay - Cushion	All seat sizes will have the width and depth of flat pan.		
<u> </u> JION	Jay Ion - multi layer foam base, moisture resistant & anti-microbial covers	\$495.00	E2607
<u> </u> JU	Jay Union - dynamic fluid, foam layering, moisture resistant & anti-microbial covers	\$580.00	E2607
<u> </u> JFUSION	Jay Fusion - Jay Flow fluid	\$605.00	E2622

ARMREST STYLE OPTIONS

<u> </u> 3796	Removable Armrests - post style - attaches to the base-height adj 2"	N/C	K0020
<u> </u> FUA	Flip-Up Armrests - post style - attaches to the base-height adj 3" & angle adj 90° - 155°	\$675.00	A9270
<u> </u> PP0031	Reclining Flip Up Armrests - attaches to the base & back-height adj 4" & angle adj 90° - 105°	\$785.00	A9270
<u> </u> 3071	Cantilever Armrests - Redlining, Flip Back, Articulating - attaches to the back-height adj 4" & angle adj 90°	\$1,500.00	A9270
<u> </u> 3331	Cantilever Quick Release Post - attaches to armrest and base (pair) - requires 3071	\$610.00	A9270

ARMREST PAD OPTIONS

<u> </u> AP3	3"x12" Desk Length Pads (pair)	N/C	K0019
<u> </u> AP4	4"x16" Tapered Pads (pair)	\$85.00	K0019
<u> </u> 1381	Trough Style Pad Left - 6" x 14" w/o hand rest, or 17", 22" w/ hand rest (each) ___ 14" ___ 17" ___ 22"	\$205.00	E2209
<u> </u> 1380	Trough Style Pad Right - 6" x 14" w/o hand rest, or 17", 22" w/ hand rest (each) ___ 14" ___ 17" ___ 22"	\$205.00	E2209
<u> </u> AP75	3"x12" Rounded Leatherette Pad (each)	\$115.00	K0019
<u> </u> AP7550	3"x14" Rounded Leatherette Pad (each)	\$120.00	K0019
<u> </u> Custom	Custom Armrest Pads: _____	RQ	

LATERAL SUPPORT OPTIONS

Part Number	Description	Price (USD)	HCPCS Code
<u>MPS Seating</u>			
J3SAMNTP	Single Swing away Lateral Hardware for Backrest (each) _____ Right _____ Left	\$685.00	E0956
J3LAT6X4	Single 6 x 4 Lateral Pad (each) _____ Right _____ Left	\$175.00	E0956
<u>Rehab Seating</u>			
J3SAMNT	Single Swing away Lateral Hardware for Rehab Canes (each) _____ Right _____ Left	\$325.00	E0956
J3LAT6X4	Single 6 x 4 Lateral Pad (each) _____ Right _____ Left	\$175.00	E0956

POSITIONING OPTIONS

<u>Positioning Hardware</u>			
30094	Flip Down Hip Guide Hardware - fixed to base near the back (each)	\$270.00	E0953
34397	Removable Hip Guide Hardware - fixed to the base near the back - flat pan only (each)	\$220.00	E0953
PP2010	Removable Knee Adductors Hardware - fixed to the base near the front (each)	\$220.00	E0953
30095	Flip Down Knee Adductors - fixed to the base near the front (each)	\$270.00	E0953
<u>Positioning Pad</u>			
50491	4" x 6" Positioning Pad (each)	\$165.00	E0956
50246	4" x 10" Positioning Pad (each) requires 34397 or PP2010	\$165.00	E0956
50049	4"x6" Gel Cover (pair) requires 50491	\$240.00	A9270

CHEST HARNESS OPTIONS

SH120M	Bodypoint Monoflex Medium Chest Strap - pad 3.5" x18.5" total length 49.5"	\$135.00	E0960
SH120L	Bodypoint Monoflex Large Chest Strap - pad 3.5" x21.5" total length 52.5"	\$135.00	E0960
PBH	Padded Butterfly Positioning Chest Strap - 7" at Chest	\$155.00	E0960
SH331L-B1	Bodypoint Stayflex Butterfly Harness - 3.5" at Chest	\$210.00	E0960

SEAT RESTRAINT OPTIONS select one

1608	Push Button Seat Restraint - 2"x64"	N/C	E0978
1608XL	Extra Large Push Button Seat Restraint - 2"x80"	\$50.00	E0978
ABSB	Airline Buckle Seat Restraint - 2"x80"	\$130.00	E0978
EB205L-B1	Bodypoint Evoflex Pelvic Stabilizer - sitting hip width 14"-18" requires HW312-KIT	\$95.00	E0978
HW312-KIT	Hardware for Bodypoint Pelvic Stabilizer	\$70.00	E1028
WC19SB6K	V6 WC 19 Transit Kit - approved according to ANSI/RESNA WC19 - includes lap belt 2"x32"	\$835.00	K0108
WC19SB7K	V6 WC 19 Transit Kit Large Belt - approved according to ANSI/RESNA WC19 - includes lap belt 2"x44"	\$835.00	K0108

LEGREST OPTIONS

Part Number	Description	Price (USD)	HCPCS Code
<u>No Power Legrests & Footplate Options</u>			
1347	Center Mount One Piece Fixed Footplate - 10"x13", 10" height adj	N/C	K0040
4054	Center Mount Flip-Up Footplate for FWD height adj _____ 1 piece _____ 2 piece	\$360.00	K0040
1371	Side Mount Removable Leg Cane - w/two piece flip-up Footplate 8.5"x 6", 13" height adj	\$300.00	K0040
AMP	Swing Away Amputee Support - 10" extension (each) _____ Right _____ Left	\$410.00	E1020

No Power Legrest Accessories

4168	Fixed Center Mount Calf Pads - w/breathable fabric	\$455.00	E0995
SMCP	Side Mount Calf Pads - w/breathable fabric	\$455.00	E0995
SP102M	Bodypoint Medium Calf Strap - side mount only length 36" & width 3.5"	\$95.00	K0039
SP102L	Bodypoint Large Calf Strap - side mount only length 40" & width 3.5"	\$110.00	K0039
4597	Heel & Side Support - Attaches to the footplate stem and footplate	\$520.00	E0951
SR230	Foot Strap - 1.5" wide strap	\$70.00	E0952

Power Legrests, Calf Pad & Footplate Options

4755	V6 Center Mount Power Elevating Articulating Legrest* - 1 pc footplate 11"x11.5"	\$3,300.00	E1012
2232	V6 Center Mount Power Elevating Articulating Legrest* - 2 pc footplate 5"x10.5"	\$3,200.00	E1012
22578R	Two Piece Footplate with 2" Metal Heel Guard - 5"x10.5" - may not fit with all seat sizes - requires 2232	\$680.00	K0042
PP0109	Large Two Piece Footplate - may not fit with all seat sizes - 5.5"x11.5" - requires 2232	\$605.00	K0041
PP0117	Large Two Piece Footplate with 2" Metal Heel Guard - requires 2232	\$815.00	K0041
3526	Side Mount Power Elevating Legrest* - Swing away legrest w/Flip up 2" height adj footplate _____ Independent _____ Combined	\$3,600.00	E1010

*Must be ordered with upgraded electronics SFCK or MFCK depending on number of options selected

Power Legrest Accessories

2219	CMPE Calf Pad Extension (pair) - requires 2232 or 4755	\$85.00	A9270
5376	CMPE Calf Pad Cover for Extension - requires 2219	\$150.00	A9270
827A	Foot Straps for 2 Piece Footplates - 11"-14" (pair) - requires 2232 or 3526	\$70.00	E0952
HL	Heel Loops - Attaches to the footplate - length 11.5"-13" & width 1" - requires 2232 or 3526	\$100.00	E0951

ELECTRONICS Penny & Giles

Part Number	Description	Price (USD)	HCPCS Code
<u>Expandable Joystick</u> - requires PG-PM90, PG-SL			
PG-JSMLEDL	LED R-Net Joystick - No LCD display or mono jacks	N/C	E2377
PG-JSMD	Color LCD Joystick - with mono jack ports for external switches	\$315.00	E2377
PG-JSMIR	Infra-Red Color LCD Joystick - with mono jack ports for external switches and IR	\$395.00	E2377
PG-JSMIRBT	Infra-Red Color LCD Joystick with Bluetooth	\$470.00	E2377
<u>Expandable Power Module</u>			
PG-PM90	R-Net Expandable Controller for V6	\$650.00	E2377
PG-SL	R-Net Harness for Expandable Controller	\$455.00	E2313
<u>Joystick Handle Type</u>			
RJK	Cone-Shaped Joystick Handle	N/C	E2323
PC102B	Bodypoint U Shaped Joystick Handle _____ 3" _____ 4"	\$150.00	E2323
PC110B	Bodypoint Grooved Mushroom Joystick Handle	\$140.00	E2323
<u>Joystick Mount</u>			
3069R	Fixed Joystick Mount Right - Depth Adj 8.25"	N/C	
3069L	Fixed Joystick Mount Left - Depth Adj 8.25"	N/C	
4607	Swing Away Joystick Mount Right	\$500.00	E1028
4608	Swing Away Joystick Mount Left	\$500.00	E1028
MM	Stealth Midline Joystick Mount - 2 position mount - Rotation 0° - 180° _____ Right _____ Left	\$1,210.00	E1028
<u>Joystick Accessories</u>			
2529	Attendant Control Joystick - requires 2533	\$1,145.00	E2331
TBB	Tash Buddy Button - Diameter 2.5" & Height .7" Outer edge force 3.4oz. Center force 7oz.	\$155.00	K0108
ESBLK	Egg Switch - single function push button that can scroll through modes or profiles - requires CPS9	\$130.00	
CPS9	Swing Away Egg Switch Hardware - Stealth	\$400.00	
JSLK	Joystick Lock - electronically locks chair from driving	\$185.00	
RVAL	Reverse Alarm - beeps when backing up	\$185.00	

ALTERNATIVE DRIVE CONTROLS

<u>Alternative Drive Systems</u>			
IDH300-1	Stealth i-Drive Head Array requires F8675 & TWB480-17S	\$8,925.00	E2330
F8675	Stealth Mounting Bracket and Egg Switch	\$535.00	
TWB480-17S	Stealth Headrest Hardware	\$470.00	E1028
HDR-4M-S-C	Switch-It Head Array - Three switch head array	\$5,300.00	E2327
3335	Chin Control - w/bib mount and adapter	\$2,530.00	E2373
SNP	Sip and Puff	\$1,475.00	E2325
OMNI2	Omni2 Display - For Alternative Drive Systems requires 5390	\$1,470.00	
5390	Omni2 Mounting Kit _____ Right _____ Left	\$665.00	E1028

ACCESSORIES

Part Number	Description	Price (USD)	HCPCS Code
1605	Waterproof Wheelchair Cover	\$130.00	A9270
1606	Waterproof Joystick Cover	\$40.00	A9270
1603	Medical Necessity Bag - Velcros to armrest - 10.5"x6"x1.25"	\$30.00	A9270
1604	Deluxe Backpack - 13.5"x15"x4" requires 4784	\$85.00	A9270
PP0052	Cup Holder - Attaches to the armrest opposite joystick - self leveling	\$140.00	A9270
A02H	Articulating Oxygen Holder - requires 4784	\$835.00	E2208
PP0035	Cane Holder - Heavy Duty requires 4784 - May not work w/some options	\$405.00	E2207
3197	Luggage Rack for V6 - Attaches to base behind the chair 10.5"x13"	\$315.00	A9270
2855	Lighting Kit for V6 - 2 headlights, 2 red marker lights w/turn signals attaches to the base	\$1,050.00	A9270
PP0029	Mud Guards - All Terrain DRIVE TIRES only - (pair) requires WH145BPB	\$340.00	A9270
PP0036	Lift Brackets for V6	N/C	A9270
4705	Charge Mate - 12 Volt/Car outlet and USB port/cell phone charger, with a max draw of 6 amps	\$475.00	A9270
PP0133	Cell Phone Holder - Adj. to fit most cell phones Size _____	\$260.00	A9270
WCR630	6' Multifolding Ramp - with traction tape	\$605.00	A9270
RAM117BU	Fishing Rod Holder	\$260.00	A9270

Be Adaptive Products

LM100	Limited Mobility Shooting Mount- gun or crossbow	\$1,325.00	A9270
TM100	Trigger Mechanism	\$735.00	A9270
FM200	Limited Mobility Fishing Mount	\$1,325.00	A9270
	For more options go to www.beadaptive.com		
DDT	Hand Held Programmer	\$1,430.00	A9270
LGSVC	Lift Gate Service - required for facilities without a loading dock	\$105.00*	

*Discounts do not apply

See our Expanded Accessory PDF @ mobility-usa.com**NOTES:**

Note: All specification and prices are subject to change without notice. Prices listed are only valid if ordering with a wheelchair. The HCPCS codes provided are not intended to be billing or legal advice, rather Innovation In Motion's interpretation of the code definitions. Use of the codes provided does not ensure coverage or payment for the item. For coverage information, verify the policy of the appropriate payer. It is recommended to contact Innovation In Motion with any questions regarding proper ordering of the chair at 1-260-665-2769.