

Super Complete

Canadian Suggested Retail Price List in USD
Nov-19

Phone: 260-665-2769

Fax: 260-665-3047

Email: iim@mobility-usa.com

www.mobility-usa.com

Quote: _____

P.O. _____

Bill To

Dealer: _____ Contact: _____

Address: _____

City: _____ State: _____ Zip: _____

Phone: _____ Fax: _____

Email: _____ Mark For: _____

Ship To Same as Bill To _____

Dealer: _____ Contact: _____

Address: _____

City: _____ State: _____ Zip: _____

Phone: _____ Fax: _____

Email: _____ Mark For: _____

Juditta Features and Specifications

- **Frame** - steel, with non-toxic epoxy black powder paint
- **Upholstery** - breathable, fire-retardant, attaches to the seat with buttons, easily removable, and machine washable or wipeable
- **Headrest** - adjustable in height, angle, depth, and side to side; provides stability to the user without obstructing the lateral movement of the head; insuring proper alignment between head and trunk. Made out of a special anti-bacterial closed cell, highly resistant to external chemical agents.
- **Backrest** - gives a proper alignment to the trunk and doesn't generate any pressure on the spine; height adj; tilt 13°-38°
- **Armrest** - flip open to be positioned behind the backrest for easy transfer
- **Seat Bottom** - adjustable inclination of 10° to 35° due to gas springs, inclined by 10° to prevent user from sliding forward
- **Legrests** - corner protectors padded for knee, swing away leg support adjustable in height and angle to help the user to get close for transitioning
- **Footplates** - flip up and height adjustable, easy access to elevators and small rooms
- **Wheels** - 6.7" swivelling solid front and 12" or 22" solid rear, drum brakes are engageable with single control pedal, 3" anti-tip wheels



JUDIB30



JUDIB60



Model B30 and B60 are suitable to be transported in a vehicle according to ISO 7176/19 and ANSI RESNA WC/19 standards

Super Cpmplete Options select one

| Quantity | Part Number | Description | Price (USD) |
|----------|--------------|--|-------------|
| | | Juditta SC - includes frame, upholstery, legrests, calf pads & hardware, 3" armpads, headrest, tie downs | |
| _____ | JUDIB30SC-16 | Juditta 16" seat with 12" rear wheels | \$3,835.00 |
| _____ | JUDIB30SC-18 | Juditta 18" seat with 12" rear wheels | \$3,935.00 |
| _____ | JUDIB30SC-20 | Juditta 20" seat with 12" rear wheels | \$4,035.00 |
| _____ | JUDIB60SC-16 | Juditta 16" seat with 22" rear wheels | \$4,235.00 |
| _____ | JUDIB60SC-18 | Juditta 18" seat with 22" rear wheels | \$4,335.00 |
| _____ | JUDIB60SC-20 | Juditta 20" seat with 22" rear wheels | \$4,435.00 |

Upholstery select one

| | | | |
|-------|--------|--|-----|
| _____ | 171658 | Breathable Dark Grey Upholstery 16" | N/C |
| _____ | 171654 | Breathable Dark Grey Upholstery 18" | N/C |
| _____ | 171660 | Breathable Dark Grey Upholstery 20" | N/C |
| _____ | 100769 | Wipeable Upholstery 16" | N/C |
| _____ | 100770 | Wipeable Upholstery 18" | N/C |
| _____ | 100771 | Wipeable Upholstery 20" | N/C |

**Positioning Options**






| | | | |
|-------|------|------------------------|----------|
| _____ | J894 | 45° Pelvic Belt | \$85.00 |
| _____ | G834 | Abduction Block | \$165.00 |

**Accessories**

| | | | |
|-------|----------|---|----------|
| _____ | G916-40 | Padded Calf Strap alternative to calf pads 16" | \$245.00 |
| _____ | G916-45 | Padded Calf Strap alternative to calf pads 18" | \$255.00 |
| _____ | G916-50 | Padded Calf Strap alternative to calf pads 20" | \$265.00 |
| _____ | G824-R40 | Reclinable Tray adj in tilt and depth 16" | \$355.00 |
| _____ | G824-R45 | Reclinable Tray adj in tilt and depth 18" | \$355.00 |
| _____ | G824-R50 | Reclinable Tray adj in tilt and depth 20" | \$355.00 |
| _____ | G896 | Padded Removable Tray Covering | \$105.00 |
| _____ | G933 | IV Pole B30 Only | \$260.00 |



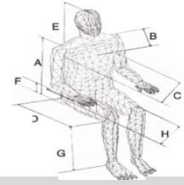
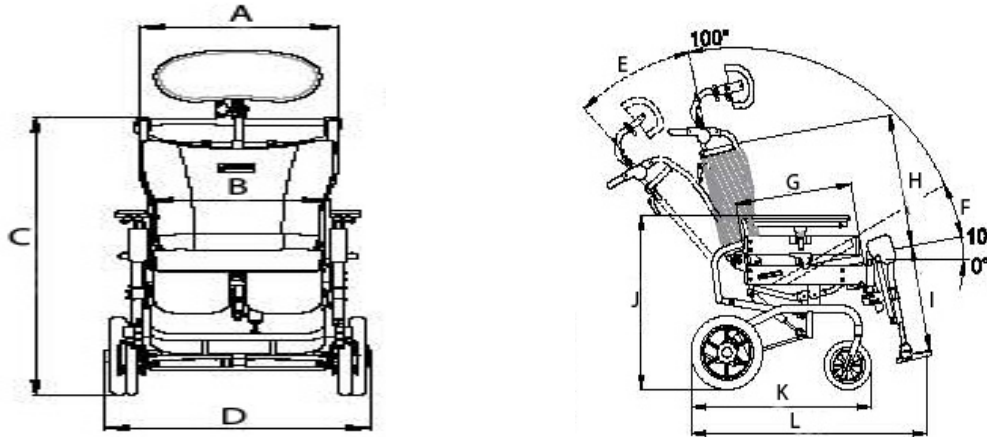
Accessories Continued

| Part Number | Description | Price (USD) | |
|-------------|---|-------------|--|
| J914 | Footrest Lock | \$225.00 |  |
| J905 | Hand Brakes - B30 Only set for rear wheel lock | \$260.00 |  |
| G892 | Removable Footplate Covering | \$160.00 |  |
| S-171658 | Extra Set of Breathable Dark Grey Upholstery 16" | \$550.00 |  |
| S-171654 | Extra Set of Breathable Dark Grey Upholstery 18" | \$550.00 | |
| S-171660 | Extra Set of Breathable Dark Grey Upholstery 20" | \$550.00 | |
| S-100769 | Extra Set of Wipeable Upholstery 16" | \$550.00 |  |
| S-100770 | Extra Set of Wipeable Upholstery 18" | \$550.00 | |
| S-100771 | Extra Set of Wipeable Upholstery 20" | \$550.00 | |
| LGSVC | Lift Gate Service For facilities without a loading dock | \$105.00* | |

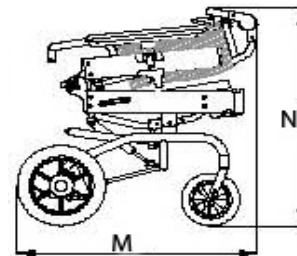
*Discounts do not apply

Client Measurements

A Back height: _____ F Lower leg length: _____
 B Chest depth: _____ G Head height: _____
 C Chest width: _____ H Arm height: _____
 D Seat depth: _____ Age: _____
 E Seat width: _____ Weight: _____

**Dimensions****Measurements in Inches**

| Juditta | Size 16 | Size 18 | Size 20 |
|------------------------|----------------|----------------|----------------|
| Max Capacity | 264.5 lbs | 286.5 lbs | 308.5 lbs |
| Unit Weight B30 | 84 lbs | 86 lbs | 88 lbs |
| Unit Weight B60 | 90 lbs | 92.5 lbs | 95 lbs |
| A | 18.5 | 20.5 | 22.5 |
| B | 16 | 18 | 20 |
| C | 40.5 - 43 | 40.5 - 43 | 40.5 - 43 |
| D B30 | 24.5 | 26 | 28 |
| D B60 | 27 | 29 | 31 |
| E | 13° - 38° | 13° - 38° | 13° - 38° |
| F | 10° - 35° | 10° - 35° | 10° - 35° |
| G | 16,17,18,19 | 16,17,18,19 | 16,17,18,19 |
| H | 22 - 24.5 | 22 - 24.5 | 22 - 24.5 |
| I | 14.5 - 19 | 14.5 - 19 | 14.5 - 19 |
| J | 28 - 31.5 | 28 - 31.5 | 28 - 31.5 |
| K | 30.5 | 30.5 | 30.5 |
| L | 39.5 | 39.5 | 39.5 |
| M B30 | 31 | 31 | 31 |
| M B60 | 34 | 34 | 34 |
| N | 31 | 31 | 31 |



Note: All specification and prices are subject to change without notice. Prices listed are only valid if ordering with a chair. For coverage information, verify the policy of the appropriate payer. It is recommended to contact Innovation In Motion with any questions regarding proper ordering of the chair at 1-260-665-2769.